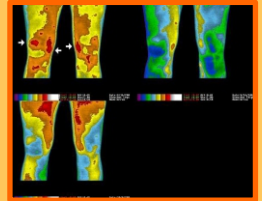


## Earthing Kit



## EARTHING HEALTH BENEFITS

- **Improve blood circulation**, reduce risk of blood clots as thins the blood upon 30mins+ use
- **Prevent and reduce chronic inflammation** root cause of most (80+) lifestyle disorders, relieve body pains
- Help reduce excess blood Sugar, B.P, Arthritis Pain, etc
- Balance circadian rhythms & associated hormonal problems (eg. MC in women w/o pills, PCOS)
- **Improve sleep**, mood & well being without medication
- Prevent premature ageing via nature's own antioxidants
- Prevent, reduce **oxidative stress**, free radical damage
- Calming effect on the nervous system, anxiety level(EEG)
- Improves **immunity** & relief in autoimmune disorders
- Protects from parasitic electric charges build up on body due to electrical, electronic devices mobile/laptop chargers



The top row of images is of the knees taken before and after 30 minutes exposure to clinical Earthing on 9-16-04. The arrows denote the most significant areas of inflammation. Note the considerable reduction in inflammation in the right image taken after 30 minutes of exposure to clinical ETT. The image on the bottom left was taken on 10-8-04 before treatment. The image shows a return of normal thermal symmetry with significant reduction in inflammation.



No  
Electricity  
bill



Till 31st Aug 25



**Disclaimer:** Information in this brochure is for educational purpose only. It is not medical advice and is not intended to replace the advice of a healthcare professional. This product technology is not intended to diagnose, cure, treat or prevent any disease.

Contact details:

✉ robin.oswal@gmail.com  
cc robin.oswal@radprosas.com

☎ +91 89830 53316

## Note:

Use Bhumi-Ka Daily taking CARE of:  
Regular/Daily monitoring parameters if on medication for any conditions e.g excess B.P &/Or Sugar as medication will have to be reduced in **consultation with your doctor**, otherwise you may instead experience Low B.P, hypoglycemia



### Bhumi-Ka V7.7 Earthing set (E.Set) Test & Use Protocol:

~Test once before & after USE(to ensure Earthing is active)

#### To Test(Power On):

1. Momentarily press inbuilt Push Button (PB), Protruding from the top of E.Set's 3 pin plug
2. The TriStar shaped Indication glows with divine blue colour
3. If indication still off (while PB pressed momentarily) means Earthing not active
4. Indication On means 'Earthing Active'.  
Indication turns off immediately, after PB is released
5. Indication On when pressed means E.set is ready for use
6. Turn off power & use E.set. Power On/Off doesn't matter during use.

#### To USE:

Power not needed

- 1) Active Earthing was verified. So now simply wear blue Elastic band



### Bhumi-Ka V8.0 Earthing set (E.Set) Test & Use Protocol:

~Test before & after every USE (to ensure Earthing is active)

~Power not needed for Earthing Use (No light bill).

#### To USE :

Plug 3 pin plug of E.set in wall socket.  
Wear blue Elastic band on wrist.

#### To Test :

1. Wear Rubber slippers.
2. Insert Tester in another socket's live pin.  
Turn on power
3. Touch the tester top by right hand finger(s).  
Neon lamp inside tester will light up weakly.
4. Now with the other/left hand touch the blue wrist band's steel part.The tester lamp should glow brighter.
5. Only if lamp glows brighter => Earthing is active

*This test can also be used in case of V7.7suspect cable break*

## Bhumi-ka Earthing Mat

Use Bhumi-Ka Plugin ready Earthing Mat as laptop/bedmat/FootMat available in any size of your choice.  
Standard Earthing Mat size is 1.5ft x 1ft.  
Send a chat msg to 8983053316 for made to order size.

## Testimonials

I'm Shrikant Kadam, a 35-year-old IT professional. After struggling with autoimmune conditions, including rheumatoid arthritis, for three years, I tried various treatments without lasting relief. However, using the Bhumi-Ka Earthing Set provided by Mr. Robin has been a game-changer. Within a week, my pain significantly reduced & over the past four months, so did my frequent stomach infections due to reduction in steroids & immunosuppressants, bonus being medical expense became half of earlier around Rs 15000

Shrikant Kadam, 35 years, IT professional.  
(On a break from his IT job, due to severe & chronic Rheumatoid Arthritis pain until he used Bhumi-Ka E.Set)

Robinji , I am using Bhumi-Ka earth set since last 40 days.After using for 10 days ,75 % of my varicose vein clots in calf muscles reduced to very small size . Now my diabetologist has reduced BP & diabetes tabs by 50 % . Instead of 2 + 2 tab,now recommended 1+ 1 tab only . This is great achievement of Bhumi earth unit . Also thankful to youfor making such useful equipment ,for the benefit of each & every person . It accelerates blood circulation & keeps healthy. Thank you once again.

Suman Kankaria, age 82,  
26 July 2024

*To know more health benefits*

Scan for video



Scan for payment



**Disclaimer:** Information in this brochure is for educational purpose only. It is not medical advice and is not intended to replace the advice of a healthcare professional. This product technology is not intended to diagnose, cure, treat or prevent any disease.